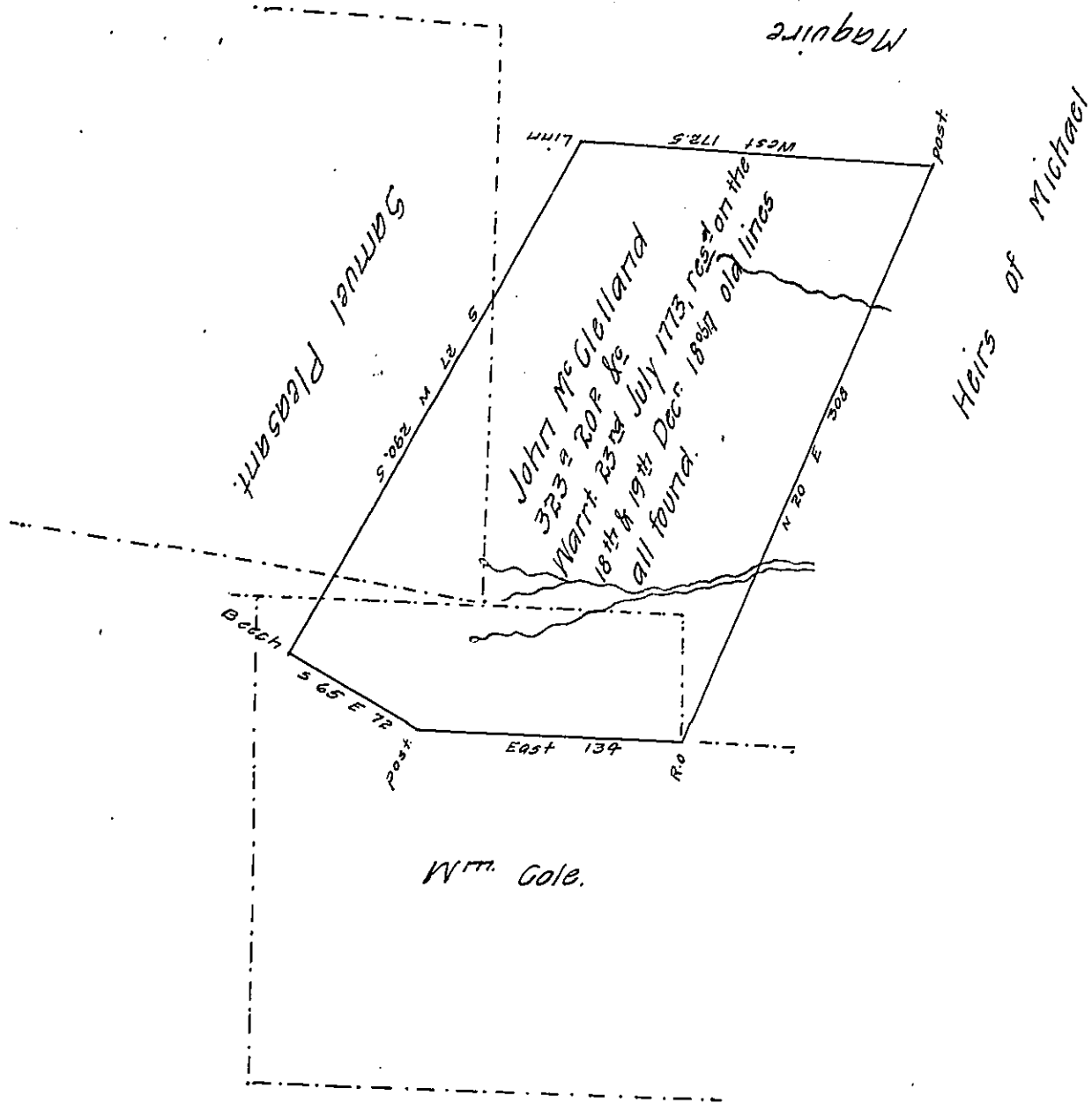


FORM NO 1.



Situated on the head branch of the beaver dam branch of Clearfield Creek including an old improvement in Cambria township Cambria county. The dotted lines shews the interference of Wm. Cole surveyed on warrant of 1784 or 5 and Samuel Pleasant on warrant of 1775, claimed by the heirs of Samuel Pleasant & Wm. Cole by the heirs of Henry Drinker. Examined by Wm. O'Keeffe.

\* claimed by John McClelland.

To the Board of Property  
of the State of Penna.

IN TESTIMONY that the above is a copy of the original remaining on file in the Department of Internal Affairs of Pennsylvania, made conformably to an Act of Assembly approved the 16th day of February, 1833, I have hereunto set my Hand and caused the Seal of said Department to be affixed at Harrisburg, this twenty-ninth day of January 1909.

*Henry Howell*  
Secretary of Internal Affairs.